

GOVERNMENT NOTICES • GOEWERMENTSKENNISGEWINGS

DEPARTMENT OF JUSTICE AND CONSTITUTIONAL DEVELOPMENT

NO. 1554

12 DECEMBER 2016

RE-DESCRIPTION: AREAS OF JURISDICTION OF OFFICES OF SHERIFFS OF THE LOWER AND SUPERIOR COURTS

I, John Harold Jeffery, Deputy Minister of Justice and Constitutional Development, acting under the powers delegated to me by the Minister of Justice and Correctional Services, and in terms of sections 3(2)(a) and 3(4) of the Sheriffs Act, 1986 (Act No. 90 of 1986), hereby:

In respect of the magisterial district indicated under Column "A" of Schedule 1, re-describe the sheriff area under Column "B", as indicated under Column "C" and "D" of the Schedule within the jurisdiction of the Lower or Superior Courts with effect from 1 March 2017; and

In respect of the magisterial district indicated under Column "A" of Schedule 2, re-describe the sheriff area under Column "B", as indicated under Column "C" and "D" of the Schedule within the jurisdiction of the Lower or Superior Courts with effect from 1 June 2017.

Given under my hand at Cape Town on this the 8th day of December Two Thousand and Sixteen.

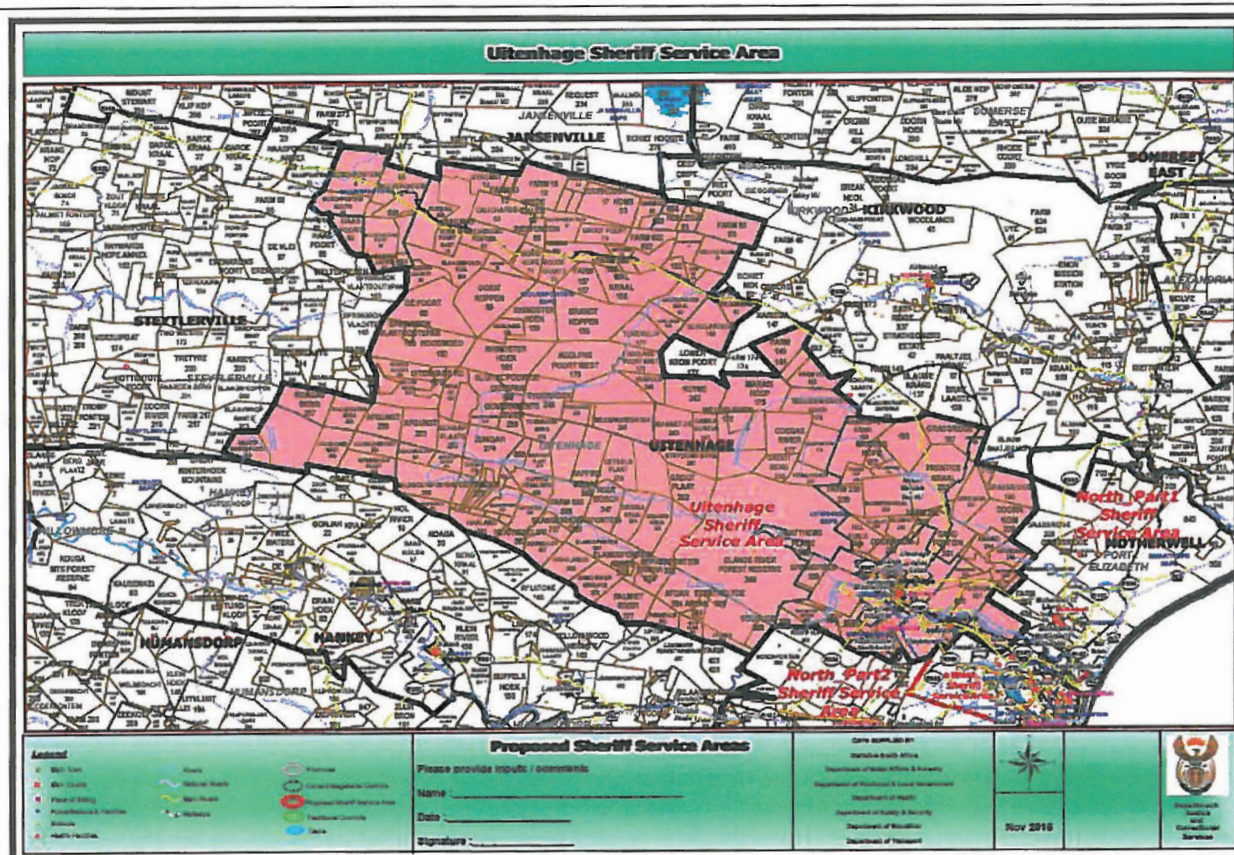

J JEFFERY, MP

DEPUTY MINISTER OF JUSTICE AND CONSTITUTIONAL DEVELOPMENT

SCHEDULE 1

COLUMN A Magisterial District	COLUMN B Sheriffs area	COLUMN C Description of the area
High Court of South Africa - Eastern Cape Local Division, Port Elizabeth; and Uitenhage Magisterial Districts	Uitenhage North High and Lower Court Uitenhage South High and Lower Court	Current Uitenhage North HL and Uitenhage South HL Sheriff Service Areas are re-described into one (1) Sheriff Service Area which is aligned to the Uitenhage Magisterial District. The Sheriff Service area of Uitenhage HL is shown in the map under Column D .

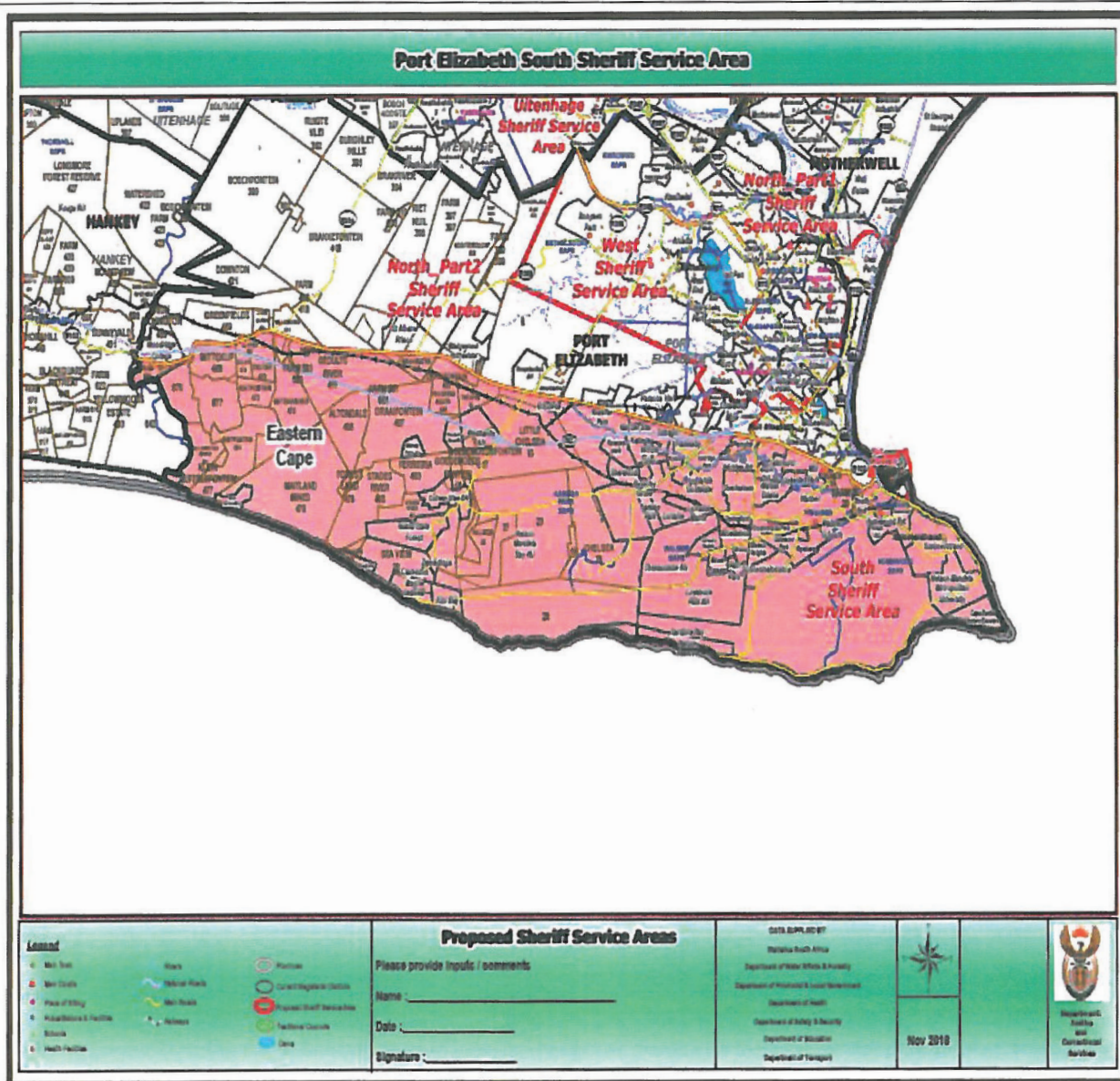
COLUMN D – Map description of Sheriff Service Area – Uitenhage HL



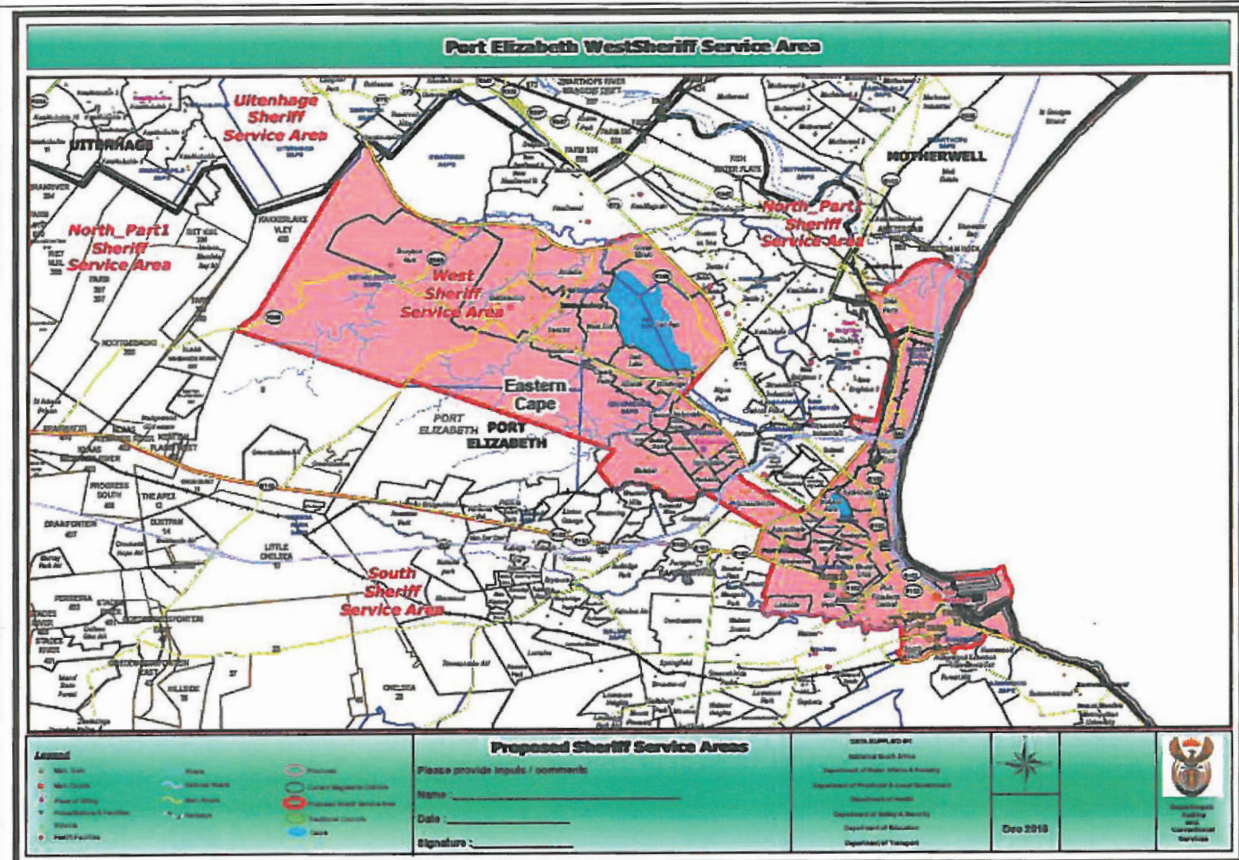
SCHEDULE 2

COLUMN A Magisterial District	COLUMN B Sheriffs area	COLUMN C Description of the area
High Court of South Africa - Eastern Cape Local Division, Port Elizabeth; and Port Elizabeth Magisterial Districts	Port Elizabeth South High and Lower Court	The vacant Sheriff Service Area of Port Elizabeth South was re-described and portions thereof allocated to the Sheriff of Port Elizabeth West. The Sheriff Service Area of Port Elizabeth South and Port Elizabeth West are shown in the maps under Column D1 & D2 .

COLUMN D 1 – Map description of Sheriff Service Area - Port Elizabeth South HL



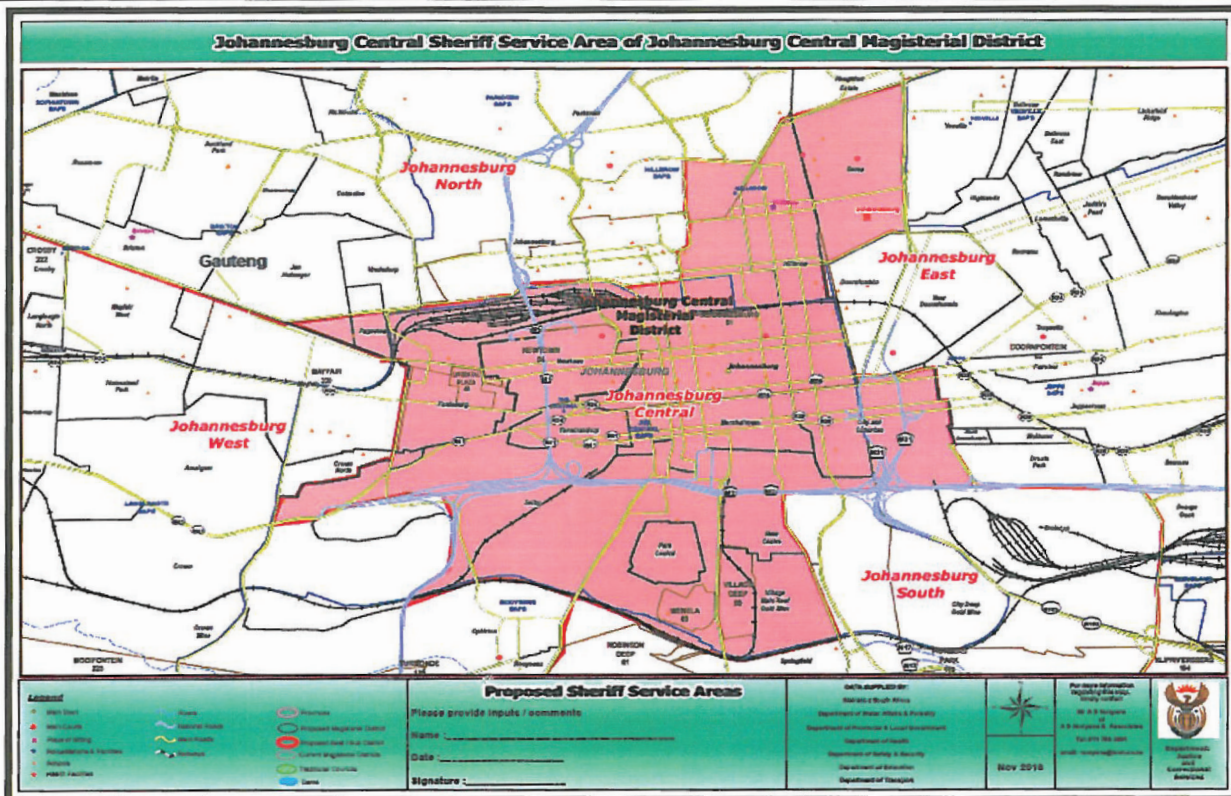
COLUMN D2– Map description of Sheriff Service Area – Port Elizabeth West HL



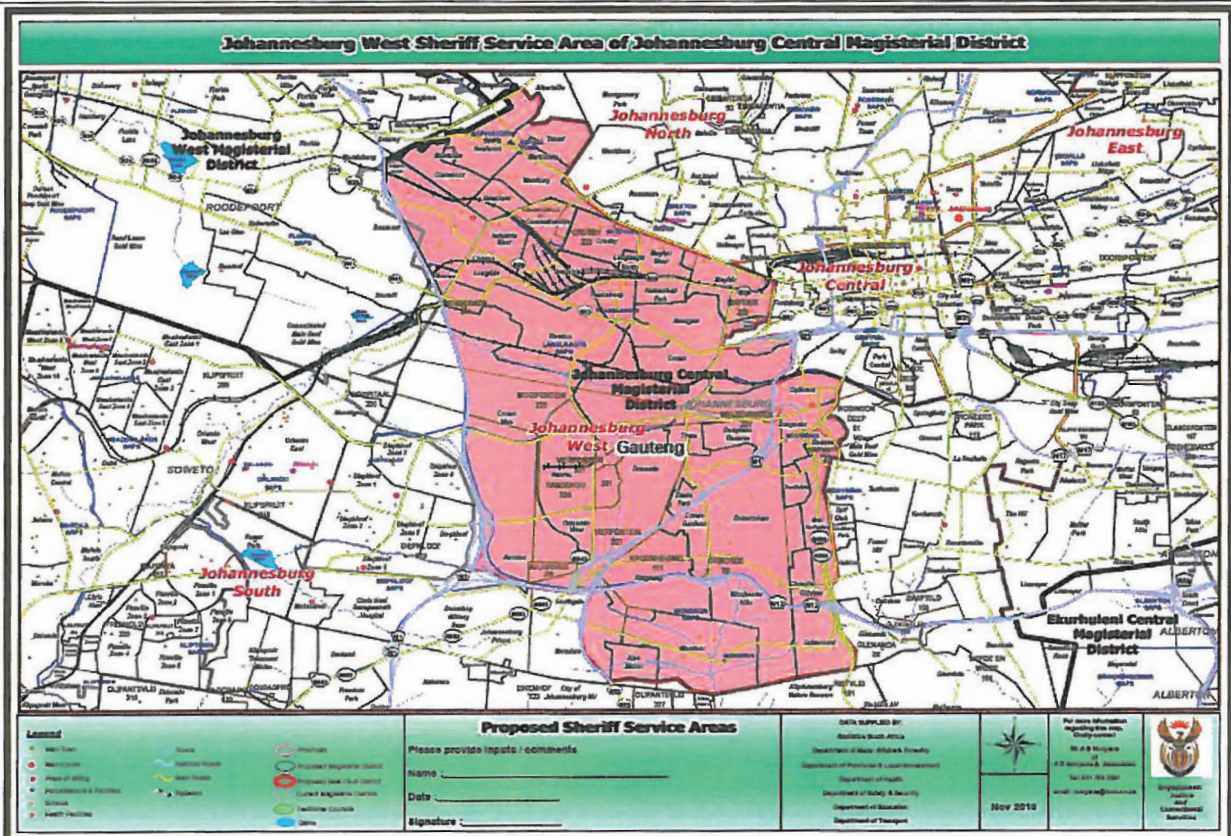
COLUMN A Magisterial District	COLUMN B Sheriffs area	COLUMN C Description of the area
High Court of South Africa – Gauteng Local Division, Johannesburg; and	Johannesburg South High and Lower Court	The vacant Sheriff Service Area of Johannesburg South located within the Johannesburg Central Magisterial District was re-described and portions thereof allocated to the Sheriff Service Areas of Johannesburg East, Johannesburg Central and Johannesburg West. Areas were allocated from the Johannesburg West Sheriff Service Area to the Johannesburg North Sheriff Service Area. The Sheriff Service Area boundaries have been aligned to the Rationalised Magisterial Boundary of the Johannesburg Central Magisterial District. The re-described Sheriff Service area of Johannesburg South, East, Central, West and North are shown in the maps under Column D1-5 .
Johannesburg Central Magisterial District	Johannesburg East High and Lower Court	
	Johannesburg Central High and Lower Court	
	Johannesburg West High and Lower Court	
	Johannesburg North High and Lower Court	

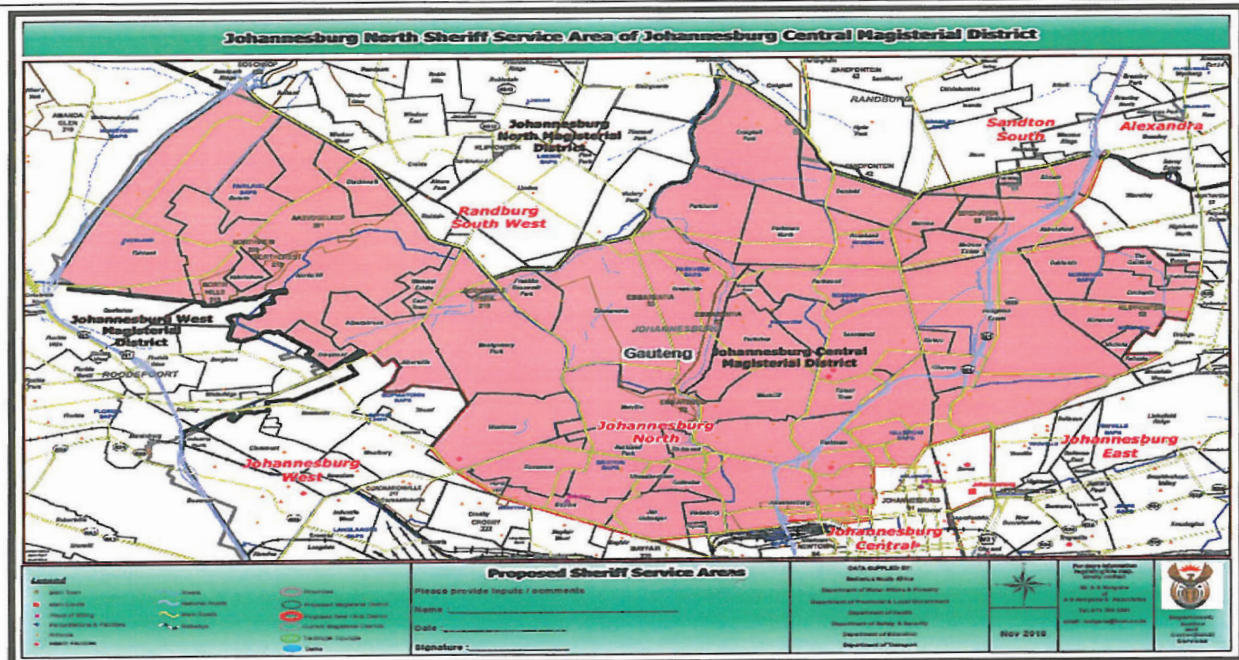
[illegible][illegible]

COLUMN D3 – Map description of Sheriff Service Area – Johannesburg Central



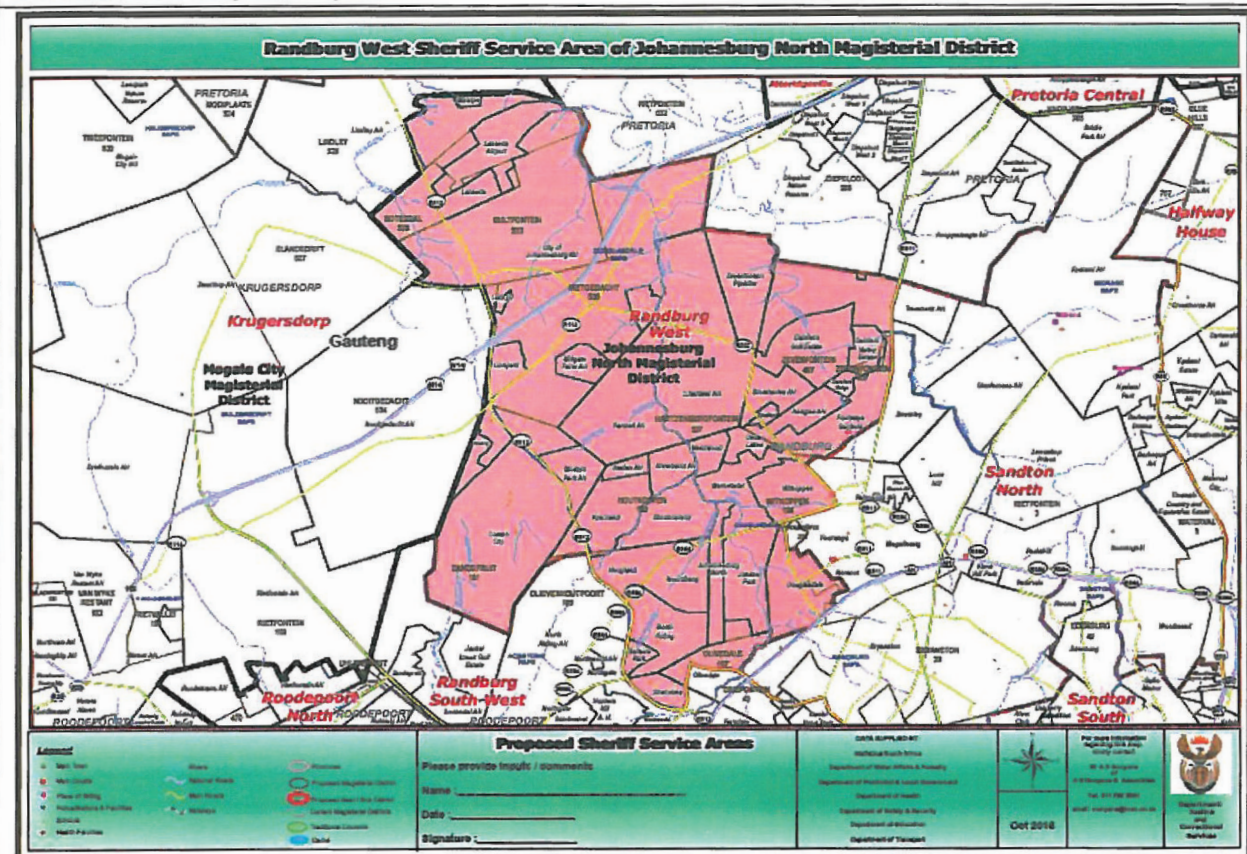
COLUMN D4 – Map description of Sheriff Service Area – Johannesburg West



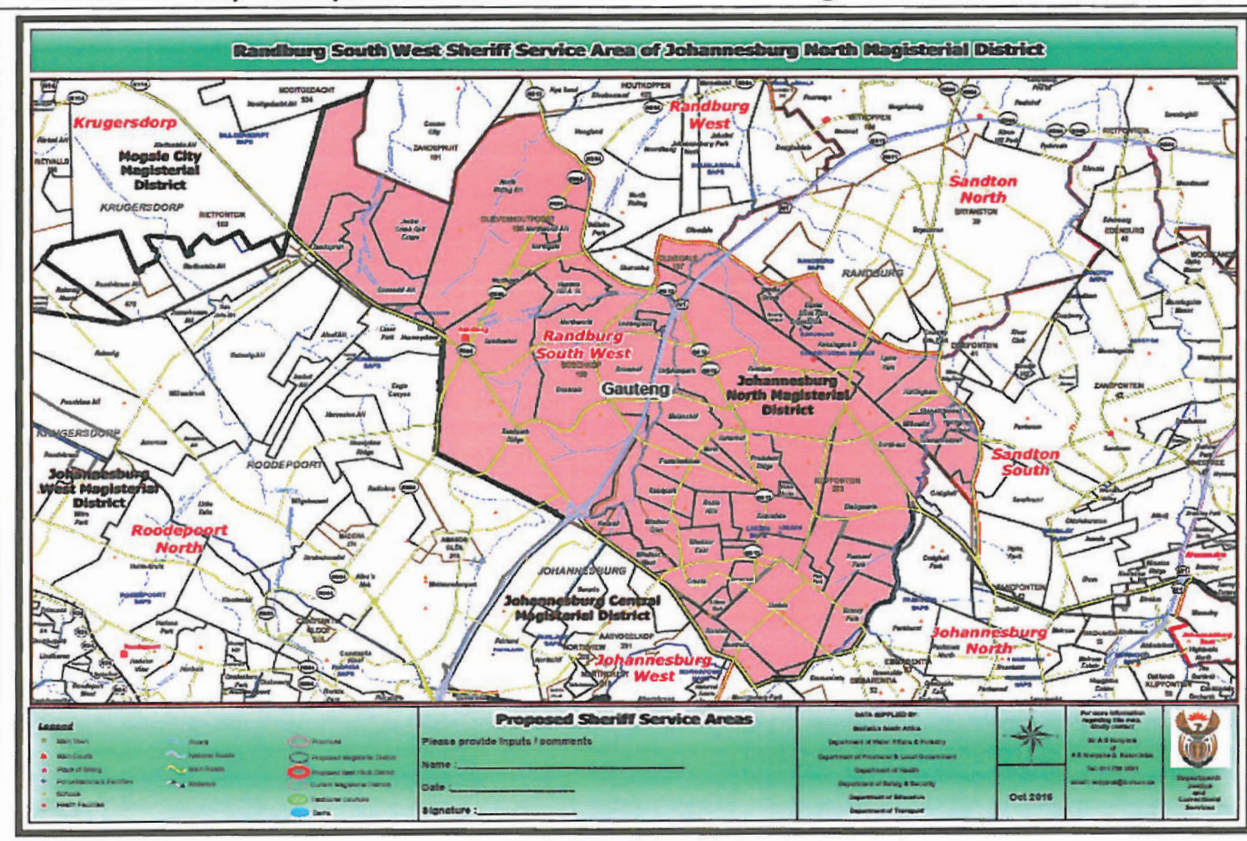
COLUMN D5 – Map description of Sheriff Service Area – Johannesburg North

COLUMN A Magisterial District	COLUMN B Sheriffs area	COLUMN C Description of the area
High Court of South Africa – Gauteng Local Division, Johannesburg; and Johannesburg North Magisterial District	Randburg West High and Lower Court Randburg West High and Lower Court Sandton North High and Lower Court Sandton South High and Lower Court Halfway House Alexandra	The vacant Sheriff Service Area of Sandton South and Randburg West as well as the Sheriffs Service Areas of Halfway House, Alexandra, Sandton North and Randburg South West together with the previously unallocated land referred to as the “no-man’s land” located within the rationalised Johannesburg North Magisterial District were re-described with the purpose to enlarge the existing Sandton North Sheriff Service Area. The Sheriff Service Area boundaries have been aligned to the Rationalised Magisterial Boundary of the Johannesburg North Magisterial District (with the exception of the area of Diepsloot). The Sheriff Service Area of Randburg South West, Randburg West, Sandton North, Sandton South, Halfway House and Alexandra are shown in the maps under Column D1-6.

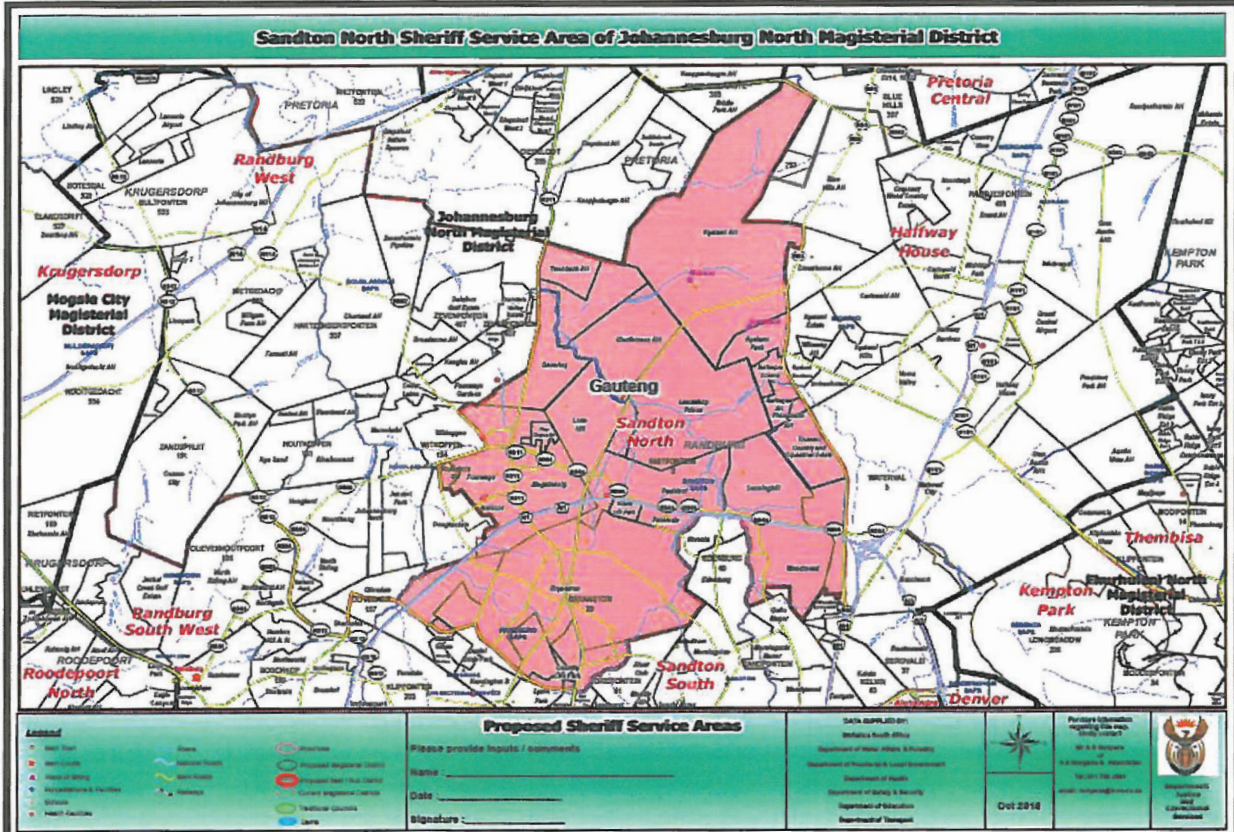
COLUMN D1 – Map description of Sheriff Service Area – Randburg West



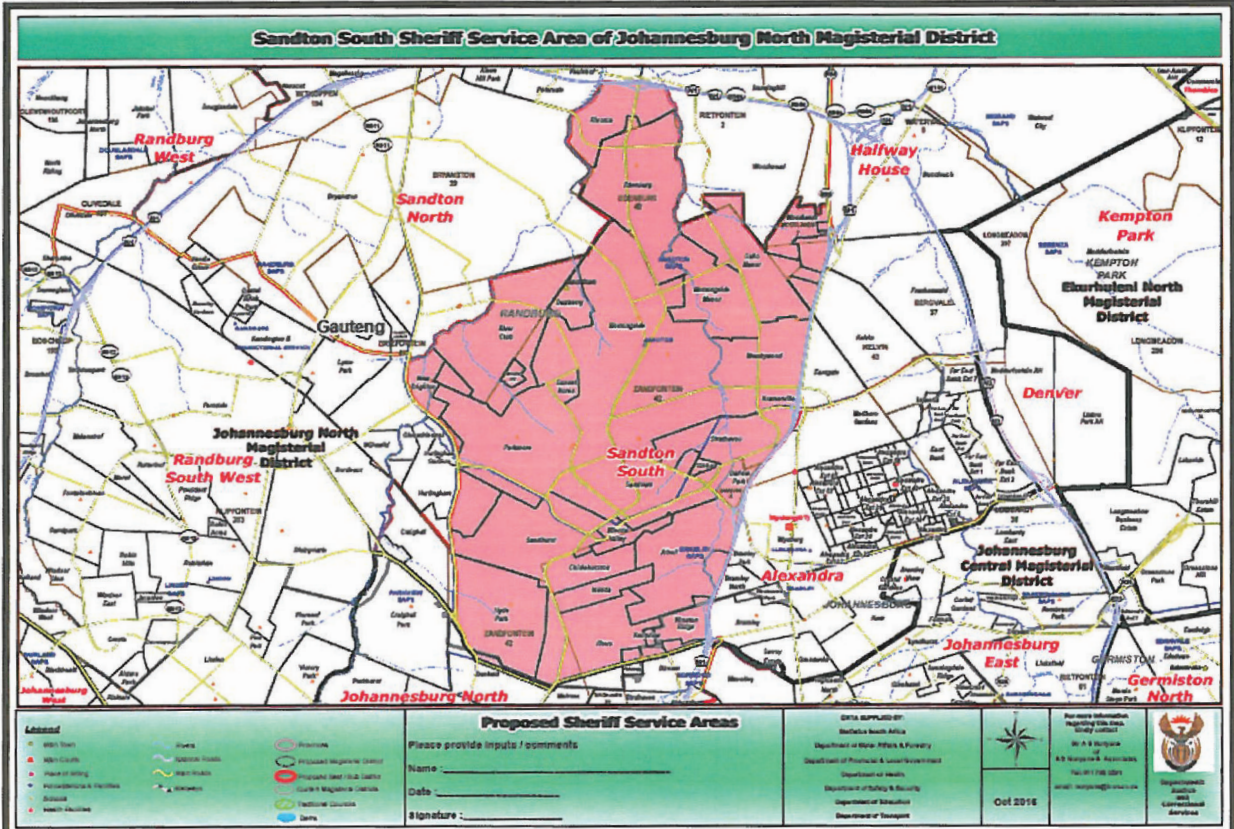
COLUMN D2 – Map description of Sheriff Service Area – Randburg South West



COLUMN D3 – Map description of Sheriff Service Area – Sandton North



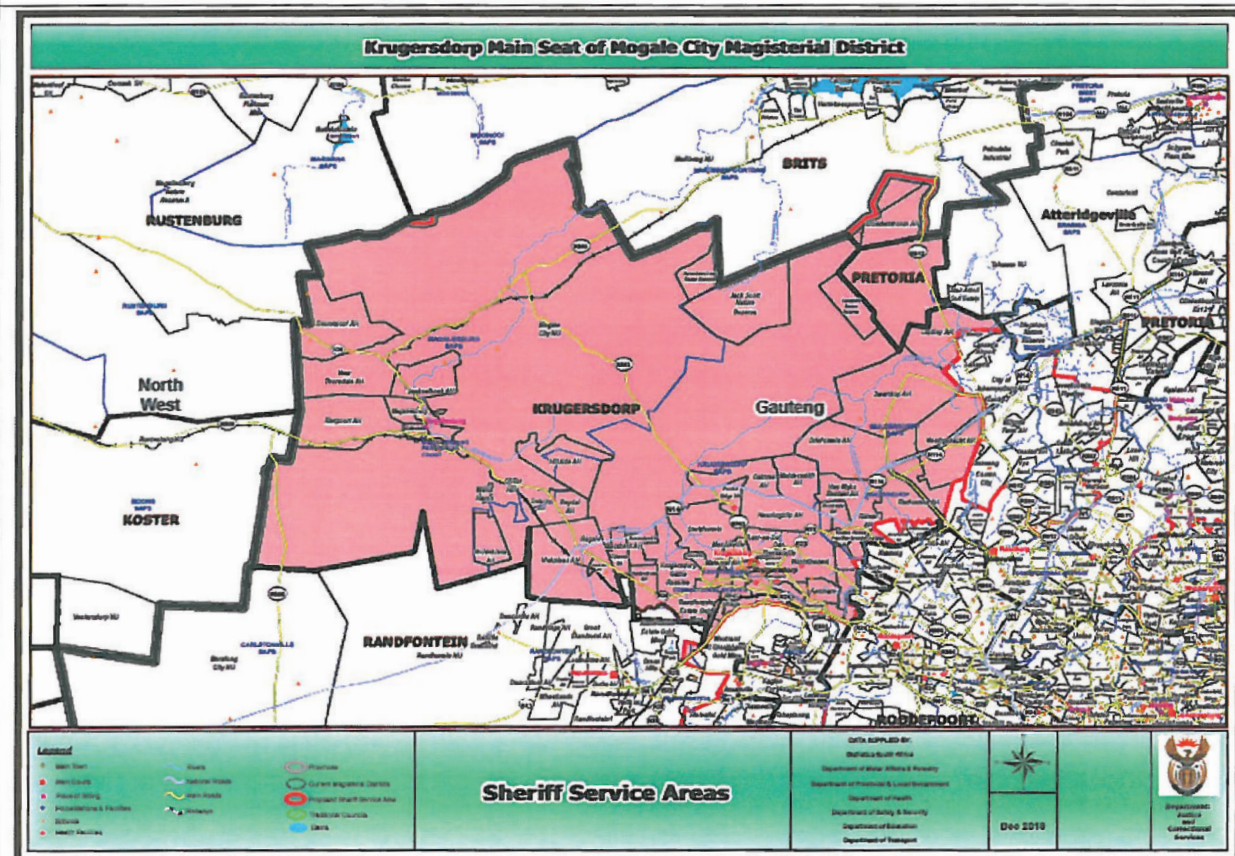
COLUMN D4 – Map description of Sheriff Service Area – Sandton South

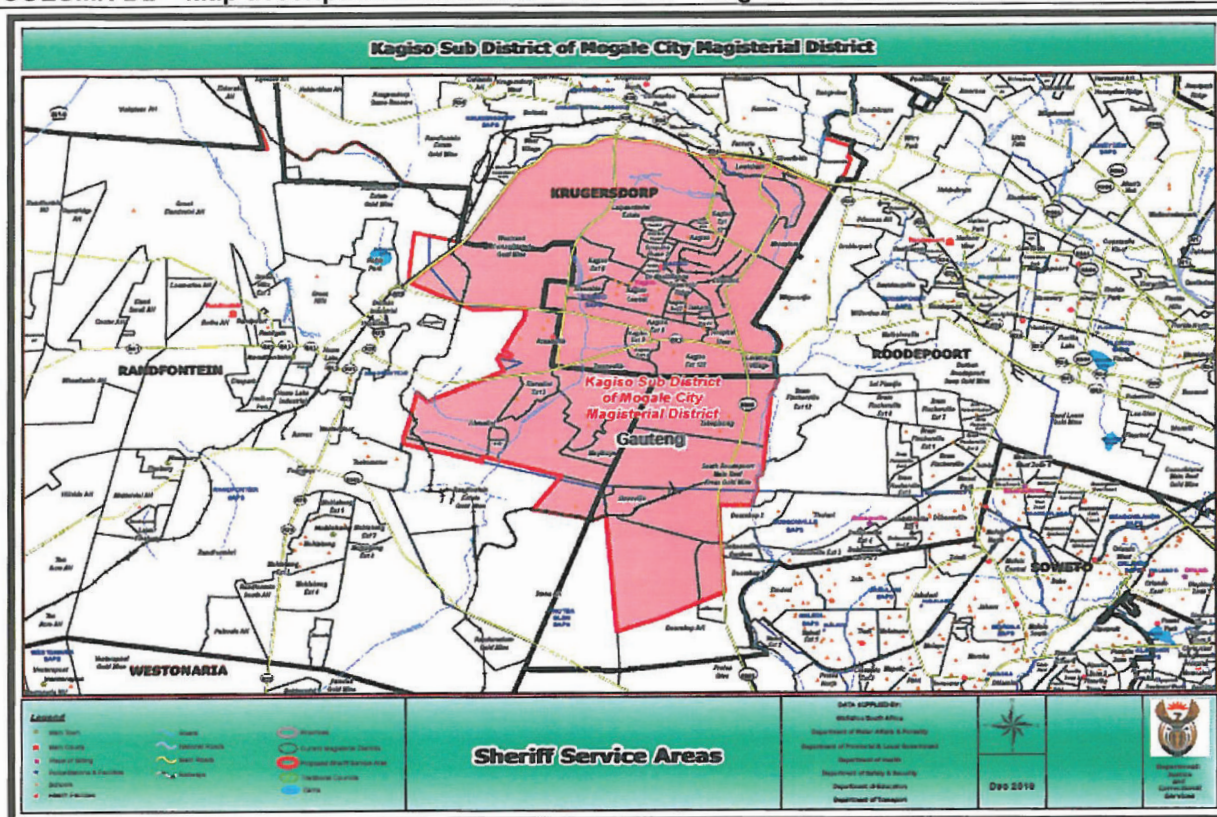


[illegible]

COLUMN A Magisterial District	COLUMN B Sheriffs area	COLUMN C Description of the area
<p>High Court of South Africa – Gauteng Local Division, Johannesburg; and</p> <p>Mogale City Magisterial District (excluding Kagiso)</p>	<p>Krugersdorp High and Lower Court</p>	<p>The vacant Sherriff Service Area of Krugersdorp has been aligned to the Mogale City rationalised Magisterial District. The entire sub-district of Kagiso although resorting within the Magisterial District of Mogale City, will resort under the Sheriff Service Area of the Roodepoort South Sheriff who already has an existing right to a portion thereof known as Tshepising. The Sheriff Service Area of Krugersdorp and Kagiso are shown in the maps under Column D1 and D2.</p>

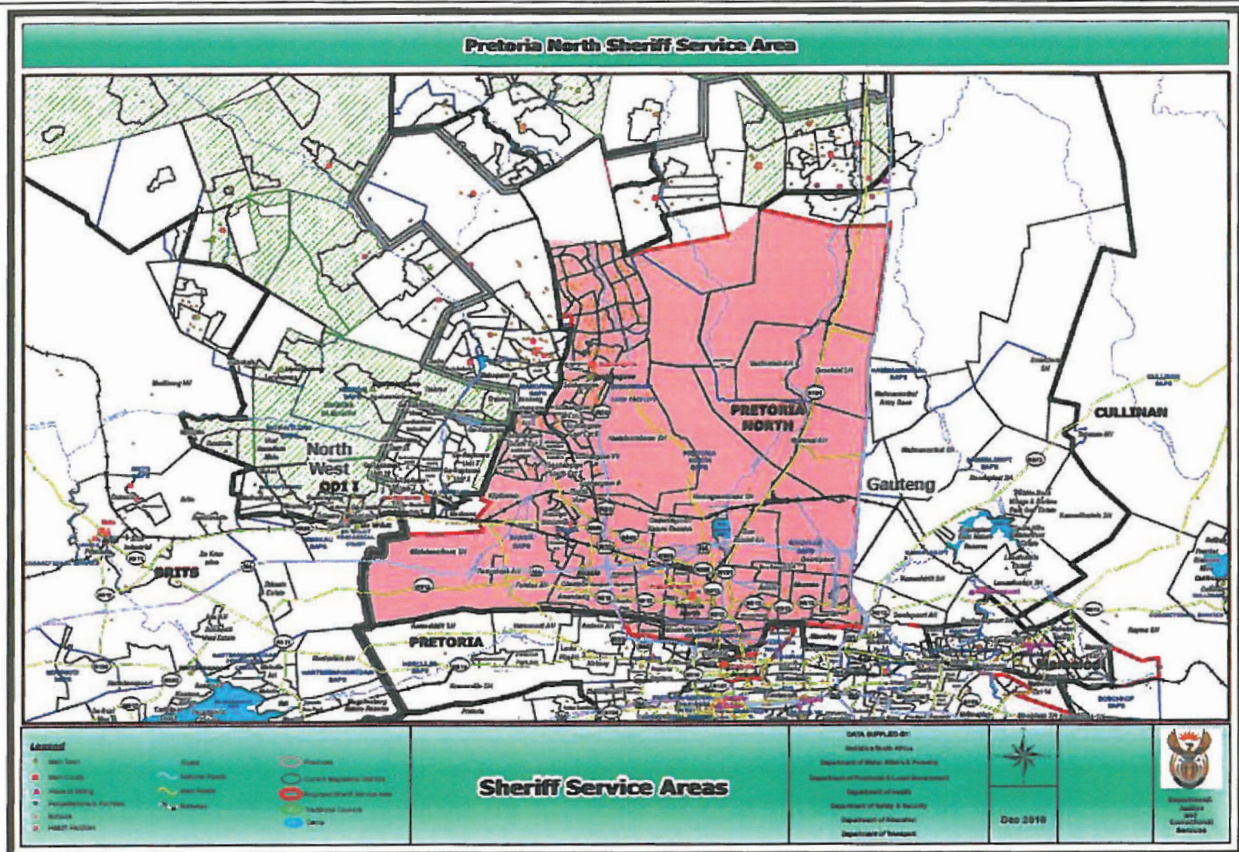
COLUMN D1 – Map description of Sheriff Service Area – Krugersdorp



COLUMN D2 – Map description of Sheriff Service Area – Kagiso Sub-district

COLUMN A Magisterial District	COLUMN B Sheriffs area	COLUMN C Description of the area
<p>High Court of South Africa – Gauteng Division, Pretoria; and</p> <p>Tshwane North Magisterial District excluding Mamelodi</p>	<p>Pretoria North High and Lower Court</p>	<p>The vacant Sherriff Service Area of Pretoria North has been aligned to the Tshwane North rationalised Magisterial District. The entire sub-district of Mamelodi although resorting within the Magisterial District of Tshwane North, will resort under the Sheriff Service Area of the Cullinan Sheriff who already has an existing right to a portion of the Mamelodi Sub-districts known as Mamelodi East. The Sheriff Service Area of Pretoria North and Mamelodi are shown in the maps under Column D1 and D2.</p>

COLUMN D1 – Map description of Sheriff Service Area – Pretoria North



COLUMN D2 – Map description of Sheriff Service Area – Mamelodi Sub-district

